

# 16<sup>th</sup> ANNUAL YALE HEALTHCARE CONFERENCE

*FRIDAY, APRIL 17<sup>th</sup>, 2020*





## TABLE OF CONTENTS

3	SCHEDULE OF EVENTS
	DIGITAL ACCESS INSTRUCTIONS
4	ZOOM
5	SLACK VIRTUAL NETWORKING
	WELCOME
6	CO-CHAIR WELCOME
7	DEAN CHARLES
8	DEAN KURTH
9	DEAN VERMUND
10	MEET OUR STUDENT TEAM
11	VISITING AUTHOR: VIVEK MURTHY
12	VISITING REPORTER: DAN DIAMOND
13	PANEL #1: ON THE FRONT LINES: EMERGENCY PREPAREDNESS AND RESPONSE
14	PANEL #2: COVID-19 IN OUR COMMUNITY: PROTECTING NEW HAVEN'S VULNERABLE POPULATIONS
15	PANEL #3: FAKE NEWS: THE ROLE OF JOURNALISM AND THE DANGERS OF MISINFORMATION IN A GLOBAL PANDEMIC
16	JOHN D. THOMPSON DISTINGUISHED VISITING FELLOW AWARD
17	CLOSING KEYNOTE: DR. KATHERINE BAICKER
18	OUR 2020 SPONSORS
19	ADVISORY BOARD
20	SPECIAL THANKS
21	PAST CONFERENCE CHAIRS
22	PITCH SLAM
24	17 <sup>TH</sup> ANNUAL YALE HEALTHCARE CONFERENCE





## SCHEDULE OF EVENTS

11:00AM – 11:15AM

### **WELCOME**

*Dean Ann Kurth and Dean Sten Vermund*

11:20AM – 11:50AM

### **OPENING INTERVIEW**

*Dr. Vivek Murthy and Dan Diamond*

11:55AM – 12:20PM

### **ON THE FRONT LINES: EMERGENCY PREPAREDNESS AND RESPONSE**

*Dr. Arjun Venkatesh, Dr. Gail D'Onofrio, Rick Fontana, and Dr. Sandy Bogucki*

12:25PM – 12:50PM

### **COVID-19 IN OUR COMMUNITY: PROTECTING NEW HAVEN'S VULNERABLE POPULATIONS**

*Evan Serio, Dr. Kathryn Hawk, Kelly Thompson, Lynn Madden, and Dr. Robert Heimer*

12:55PM – 1:20PM

### **FAKE NEWS: THE ROLE OF JOURNALISM AND DANGERS OF MISINFORMATION IN A GLOBAL PANDEMIC**

*Dan Diamond, Dr. James Hamblin, and Julie Rovner*

1:25PM – 2:00PM

### **MEDICAID FOR SOME? MEDICARE FOR ALL? EXPANDING INSURANCE COVERAGE AND COVID-19 IMPLICATIONS**

*Dr. Katherine Baicker  
2020 John D. Thompson Distinguished Visiting  
Fellow's Closing Keynote Address*



## DIGITAL ACCESS INSTRUCTIONS: ZOOM WEBINAR

### **Zoom Webinar Access Link:**

<https://zoom.us/j/505290340?pwd=UnpQOWhXTmRLczhZcGpBV0FMQ1BOZz09>

### **Webinar Password: 177664**

*The Webinar Link will go live at 10:50am on Friday, April 17th. You will not be able to enter the Webinar any earlier than 10:50am.*

You are not required to download the Zoom application to access our webinar, however, you are required to create a free account if you elect to view online.

Please note that Zoom Webinar Services automatically disable attendee microphones and webcams. This is not a malfunction of your Zoom application; it simply reduces accidental background noise.

### **Having technical difficulties?**

Please submit a message via the Zoom chat feature, and a member of our team will assist you. If you cannot access the chat box, you can email [yalehealthcareconference@yale.edu](mailto:yalehealthcareconference@yale.edu).

### **Zoom Code of Conduct:**

We kindly request that our attendees to remain respectful when messaging via the Zoom chat function. Any conduct or speech that may be considered discriminatory and/or offensive in nature will be deleted. Offenders will be notified, removed from the platform, and will have their webinar access revoked.



## DIGITAL ACCESS INSTRUCTIONS: SLACK NETWORKING CHANNEL

### SLACK ACCESS LINK:

[https://join.slack.com/t/yhc2020/shared\\_invite/zt-crleezbm-l9UAj3xKSCUFm6clDOuUDw](https://join.slack.com/t/yhc2020/shared_invite/zt-crleezbm-l9UAj3xKSCUFm6clDOuUDw)

**OPENING DATE:** Wednesday, April 15th, 2020

**CLOSING DATE:** Friday, April 24th, 2020

### YHC VIRTUAL NETWORKING CODE OF CONDUCT

- Be kind to one another and be respectful of diversity of thought, origin, and identity to create a warm and inclusive environment.
- Participate meaningfully, build on one another, and feel free to connect offline to continue productive conversations.
- Any conduct or speech that may be considered discriminatory and offensive in nature will be deleted. Offenders will be notified and removed from the platform.

### PLATFORM USAGE INFORMATION

- In order to access our networking channels, simply create a Slack account using the link above. Once you create an account, you will be granted automatic access.
- Only the most recent 10,000 messages will be retained on this platform. Previous messages will not be archived, and the entire channel will be deleted after the closing date.
- If you make a connection, we highly recommend exchanging contact information prior to the Slack channel closing date one week after the conference.
- You may comment and/or post external content that you believe will further the conversation at any time.
- You can directly address participants by typing "@"

### OUR CHANNELS

**#intro:** Utilize this channel to broadly introduce yourself to the YHC community.

**#networking:** We have curated multiple #networking channels so you can connect with peers in your areas of interest.

**#paneldiscussion:** There is a separate channel for each panel to create space for further discussion. We will note in each panel's "description" section if speakers will be available to answer questions following their panel. Additionally, if time allows, we will pass questions on to the panelists to be addressed live. We encourage you to post your questions and "like" your favorites.

#### For Yale Alumni:

It's no alumni breakfast, but we have created a private networking channel specifically for alums to access at your leisure! If you are an alumnus but cannot access the **#networking-alumni** channel, please email [yalehealthcareconference@yale.edu](mailto:yalehealthcareconference@yale.edu); we will be more than happy to assist with troubleshooting.

**Suggestions, Questions or Concerns? Message our #conferencesupport channel!**





## W E L C O M E

Dear Friends and Colleagues,

We are thrilled to welcome you to the 2020 Yale Healthcare Conference! For the 16th consecutive year, we are proud to bring together Yale University students, faculty, alumni, and healthcare community members from a variety of impressive backgrounds to engage in dynamic conversations to advance the frontiers of healthcare.

This year feels different, however. COVID-19 has thrown the entire world for a loop, with social distancing, quarantine, and shelter in place recommendations. We have witnessed an unparalleled display of heroism and compassion as healthcare professionals and innovators unite on the front line to tackle this global challenge head-on. As graduating students from Yale University's Health Professional Programs, we were all struck by what an important time it is to be entering the fields of healthcare and public health.

The need for conversation and togetherness during this uncertain time motivated us to refocus our conference, providing a platform to connect and engage in dialogue surrounding the role of public health and management in this time of crisis. About five weeks ago, we decided to table our original program, "The Healthcare [R]evolution: Is Affordability Achievable?" and shift to our current theme, "COVID-19: Responding to a Public Health Crisis." Given the reality of all of our lives today, we hope to highlight the many contributions being made by healthcare professionals at home and abroad.

With panels on togetherness and social networks, emergency preparedness, information portrayal, and how COVID is affecting the insurance landscape as well as the health of those most vulnerable among us, our speakers and our audiences will, together, explore how healthcare has been impacted by this global pandemic. We hope to encourage all participants to take on the role of student, learning and adapting to our current reality which is evolving at an unprecedented pace, and do so with a relentless optimism – as our industry will forever change as a result of the challenges faced today.

To our sponsors, speakers, Advisory Board members, SOM staff, and many others who have contributed to make this day a reality, we thank you. And an extra thank you to our 12 incredible peers who comprise our 2020 Student Team. This transition would absolutely not be possible without your dedication: Aneta Gasiewska, Alex Mountford, Andrew Nguyen, Emily Miron, Golden Gao, Helen Kasten, Jake Langbein, Judith McCartney, Julia Frederick, Lillian Wolfensohn, Mario Feola, and Nick Desien. Together, we can overcome this challenge and continue to build a future for healthcare that we believe in.

Sincerely,

Your 2020 Conference Co-Chairs



**Alexandra Knopf**  
2020 MPH Candidate  
*Yale School of Public Health*



**Jenne Lahov**  
2020 MSN Candidate  
*Yale School of Nursing*



**Gus Roman**  
2020 MPH/MBA  
Candidate  
*Yale School of Management & Public Health*



**Kerwin Charles,  
PhD, MS**

Dean, Yale School of  
Management

## WELCOME FROM DEAN CHARLES

If this were any other year, the purpose of my writing here would have been to welcome you to the Yale School of Management. Perhaps you would've been walking to Evans Hall from your apartment in the East Rock neighborhood; perhaps you would've been visiting New Haven, CT for the first time. This, however, is an exceptional year. I hereby welcome you to the first-ever virtual Yale Healthcare Conference.

That we are all having to convene remotely as we adhere to social distancing guidelines is a testament to the relevance and urgency of this very conference. Covid-19 has reshaped our world for the foreseeable future: how we learn, work, eat, shop, socialize, and celebrate life's big occasions. The ways in which we are navigating what's been deemed a "new normal" is very much shaped by those of you who are participating here, as well as your peers.

I find myself extending gratitude more often these days, and there are several persons I wish to commend here. First, there are the student leaders who swiftly reimagined this conference not only in format but in content; the topics being explored, from emergency preparedness to funding to the effects of social distancing, are of the utmost importance and reflect your keen judgment and awareness of the world's most pressing needs. For the speakers, panelists, and sponsors, I deeply appreciate your time, expertise, and support, which serve to make this day happen.

More generally, I want to thank you all as leaders working across sectors to advance and deliver healthcare - whether you are serving on the frontlines of this pandemic or preparing to address its impact in the years ahead. Your dedication to serving the public is not just inspiring; it's the bedrock of our society. Our future is more hopeful because of you. Once again, and I say this not lightly, thank you.

Sincerely,

**Kerwin K. Charles**

*Indra K. Nooyi Dean | Yale School of Management*

*Frederic D. Wolfe Professor of Economics, Policy, and Management*



## WELCOME FROM DEAN KURTH



**Ann Kurth, PhD,  
RN, CNM, MPH**

Dean, Yale School of  
Nursing

To the attendees of the 2020 Yale Healthcare Conference,

This conference always stands out for the breadth and depth of the content it offers, and this year promises no different. In fact, this year's agenda, while abbreviated, is even more critical given the unprecedented circumstances in which we find ourselves.

The current pandemic has exposed so many previously unresolved aspects of how healthcare is delivered in the United States. From a health workforce perspective, while nurses' central role in health systems has often been overlooked, SARS-CoV-2 has laid bare exactly how critical nurses are to high-quality patient care especially in crisis situations. For example, much attention has been focused on the concern over having sufficient ventilators, with lesser focus on the lack of adequate reserves of healthy nurses who are able to manage this equipment and the patients in need of it, 24/7. Though we're racing against time now, after we are through the worst of this pandemic, we must apply many important lessons about how to strengthen health systems and workforces not only for COVID-19 but for future pandemics. Nurses, in partnership with health systems and communities, will play an integral role in these efforts.

I so look forward to experiencing today with you.

Respectfully,

**Ann Kurth, PhD, CNM, MPH, FAAN**

*Dean, Yale School of Nursing*

*Linda Koch Lorimer Professor of Nursing*





## WELCOME FROM DEAN VERMUND



**Sten Vermund,  
MD, PhD**

Dean, Yale School of  
Public Health

Welcome to the 16th Annual Yale Healthcare Conference entitled: "COVID-19 Responding to a Public Health Crisis."

Responding effectively to the novel coronavirus pandemic is essential to our mission as healthcare professionals. The emergency – reminiscent of influenza in 1918-1919 before the era of modern medicine -- demands meticulous research, informed advocacy, and engaged participation as we respond to the crisis with our local, state, national, and international leaders.

Each day we confront thousands of new and serious COVID-19 cases around the world, a declining global economy, and severely stressed nursing homes, clinics, and hospitals. Even as we address this crisis, we must examine why our health system was so woefully unprepared for it, despite decades of warnings about the near-certainty of an eventual global respiratory viral pandemic.

The Yale School of Public Health (YSPH) and the Yale School of Management (SOM) are enthusiastic partners in this annual conference. Thank you to all of the student organizers and volunteers from our schools as well as the Yale Schools of Nursing and Medicine that have made this a "virtual" reality. Your continued efforts are vital in addressing and highlighting the many lessons being learned from the COVID-19 pandemic in the US and around the globe.

We in the YSPH are privileged to partner with SOM in preparing future leaders in public health, management, policy, and financing. On behalf of our collaborating communities, thank you to the organizers, speakers, sponsors, attendees, and everyone working to flatten the curve.

I urge you to use our websites -- Yale's COVID-19, Yale Health COVID-19 FAQs, and YSPH information -- for the latest guidance. Let us all do our part to stay healthy as we do everything that we can to resolve this unprecedented public health and global humanitarian emergency!

Sincerely,

**Sten H. Vermund**

*Dean, Yale School of Public Health*

*Anna M.R. Lauder Professor of Public Health Professor of Pediatrics, Yale School of Medicine*



## MEET OUR 2020 STUDENT TEAM

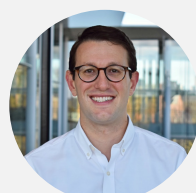
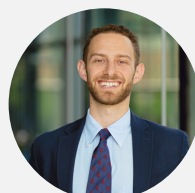
### CONTENT

*Aneta Gasiewska  
Judith McCartney  
Julia Frederick  
Mario Feola*



### FINANCE

*Helen Kasten  
Jake Langbein  
Nick Desien*



### LOGISTICS

*Alex Mountford  
Emily Miron  
Golden Gao*



### MARKETING

*Andrew Nguyen  
Lillian Wolfensohn*





## VISITING AUTHOR: DR. VIVEK MURTHY



### Vivek Murthy, MD

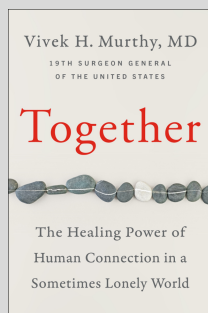
19<sup>th</sup> Surgeon General  
of the United States

Author, *"Together: The  
Healing Power of  
Human Connection in a  
Sometimes Lonely  
World"*

**Dr. Vivek H. Murthy** served as the 19th Surgeon General of the United States from December 15, 2014 to April 21, 2017. As America's Doctor, he called the nation's attention to critical public health issues including the opioid epidemic, e-cigarettes, and emotional health and well being. As the Vice Admiral of the U.S. Public Health Service Commissioned Corps, he oversaw a uniformed service of 6,600 officers dedicated to safeguarding the health of the nation. Prior to serving in government, he conducted research on vaccine development and clinical trial participation and founded several organizations focused on HIV/AIDS education, rural health, physician advocacy, and clinical trial optimization.

Dr. Murthy received his bachelor's degree from Harvard and his M.D. and M.B.A. degrees from Yale. He completed his internal medicine residency at Brigham and Women's Hospital and Harvard Medical School where he later joined the faculty. He currently resides in Washington, D.C. with his wife, Dr. Alice Chen, and their two children.

Dr. Murthy's Opening Interview, conducted by Dan Diamond, will focus on his role as 19th Surgeon General of the United States, his upcoming book, and the role of loneliness in times of aggressive social distancing.



*After becoming the 19th Surgeon General of the United States, one of the first things on Dr. Vivek Murthy's agenda was to spend the first few months on a listening tour of the United States. What he didn't expect to discover was that loneliness would emerge as a major public health concern--a root cause and contributor to many of the epidemics sweeping the world today, from alcohol and drug addiction to violence to depression and anxiety. In his groundbreaking book "TOGETHER: The Healing Power of Human Connection in a Sometimes Lonely World," Murthy argues that loneliness is affecting not only our health, but also how our children experience school, how we perform in the workplace, and the sense of division and polarization in our society.*

*Murthy found that there were few issues that elicited as much enthusiastic interest from both very conservative and very liberal members of Congress, from young and old people, or from urban and rural residents alike. Loneliness was something so many people have known themselves or have seen in the people around them. It's a universal condition that affects all of us directly or through the people we love.*

*For TOGETHER Murthy traveled the country and abroad, meeting with doctors, scientists, children, parents, and community members, and looked to the latest science to better understand why people are feeling so disconnected. It's no surprise that in our increasingly complex world, Murthy found equally complex forces contributing to loneliness.*

*Told with great compassion and hope, TOGETHER makes a powerful, urgent and convincing argument for why we can and must build a more connected world.*





## Dan Diamond

Reporter, Politico  
PULSE

Host, Politico  
"PulseCheck" Podcast

## VISITING REPORTER: DAN DIAMOND

Dan Diamond investigates health care politics and policy, with a special focus on the Trump administration and the Covid-19 outbreak. He also co-authors "POLITICO Pulse," the must-read morning briefing on health care politics and policy, and hosts the "PULSE CHECK" podcast, which features conversations with lawmakers, leaders and thinkers.

Diamond's high-impact reporting has helped spark congressional investigations, inspector general probes and the resignation of HHS Secretary Tom Price. Diamond also has done prize-winning reporting on hospitals' community obligations and deep investigations of the nation's most vulnerable populations.

Before joining POLITICO, Diamond served as the Advisory Board Company's senior director of news and communications. His work has appeared at Forbes, Vox, Kaiser Health News and other publications.

Diamond is a graduate of the University of Pennsylvania and has appeared to discuss health care, politics and policy on NPR's "All Things Considered" and "Fresh Air," NBC, BBC, CBS, CNN, MSNBC, the Dan Patrick Show and other programs. Diamond has been a Yale University Poynter fellow and a fellow of the Association of Health Care Journalists.

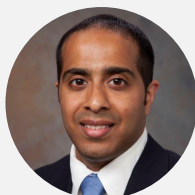
Diamond will conduct the opening Interview with Dr. Murthy, which will focus on Dr. Murthy's role as 19th Surgeon General of the United States, his upcoming book, and the role of loneliness in times of aggressive social distancing.



## PANEL # 1

### ON THE FRONT LINES: EMERGENCY PREPAREDNESS AND RESPONSE

This panel will explore COVID-19 emergency preparedness through the following frameworks: high-level public health and disaster response; community city-wide response; and hospital, emergency department, and medical response.



#### PANELIST

##### **Dr. Arjun Venkatesh**

Associate Professor of Emergency Medicine and Chief of the  
Section of Administration, *Yale School of Medicine*  
Scientist, *Yale Center for Outcomes Research and Evaluation*



#### PANELIST

##### **Rick Fontana**

Director of Emergency Operations, *City of New Haven Office of  
Emergency Management*



#### PANELIST

##### **Dr. Sandy Bogucki**

Professor of Emergency Medicine, *Yale School of Medicine & Public  
Health*



#### MODERATOR

##### **Dr. Gail D'Onofrio**

Professor and Chair of the Department of Emergency Medicine, *Yale  
School of Medicine*  
Physician-in Chief of Emergency Services, *Yale-New Haven Hospital*  
Professor, *Yale School of Public Health*



## PANEL # 2

### COVID-19 IN OUR COMMUNITY: PROTECTING NEW HAVEN'S VULNERABLE POPULATIONS

This panel will explore different perspectives on protecting vulnerable populations in New Haven during the COVID-19 Pandemic, including those struggling with homelessness and substance abuse.



#### PANELIST

##### **Evan Serio**

Program Manager, *Downtown Evening Soup Kitchen (DESK)*



#### PANELIST

##### **Dr. Kathryn Hawk**

Assistant Professor of Emergency Medicine, *Yale School of Medicine*  
Attending Physician, *YNHH Emergency Department*



#### PANELIST

##### **Kelly Thompson**

President & CEO, *Alliance for Living*



#### PANELIST

##### **Dr. Lynn Madden**

CEO, *APT Foundation*  
Post-Doctoral Associate, *Yale School of Medicine*



#### MODERATOR

##### **Dr. Robert Heimer**

Professor and Chair of the Department of Emergency Medicine, *Yale School of Medicine*  
Professor, *Yale School of Public Health*





## PANEL #3

### FAKE NEWS: THE ROLE OF JOURNALISM AND DANGERS OF MISINFORMATION IN A GLOBAL PANDEMIC

This panel will bring together some of journalism's leading voices in healthcare and policy to discuss the challenge of reporting during the greatest public health crisis of our generation.



#### PANELIST

##### **Dan Diamond**

Reporter, *Politico PULSE*  
Host, "PulseCheck" Podcast



#### PANELIST

##### **Dr. James Hamblin**

Staff Writer, *The Atlantic*  
Lecturer, Yale School of Public Health



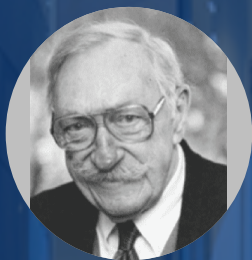
#### MODERATOR

##### **Julie Rovner**

Chief Washington Correspondent, *Kaiser Health News*  
Host, KHN "What the Health?" Podcast



## JOHN D. THOMPSON DISTINGUISHED VISITING FELLOW AWARD



**John D. Thompson**

The faculty, students, and alumnae of the YSPH Health Care Management Program are proud to celebrate and honor the memory of Professor John D. Thompson with the John D. Thompson Distinguished Visiting Fellow Award. This award pays tribute to Professor Thompson's contributions as an educator, researcher, and mentor in health administration, including his pioneering work in healthcare finance and hospital quality of care. This year, we are proud to present this award to Dr. Katherine Baicker, a notable health economist who exemplifies and upholds Dr. Thompson's values.



**Katherine  
Baicker, PhD**  
*2020 Award Winner*

John D. Thompson (1917-1992) was a professor at Yale's Schools of Nursing, Medicine, and Public Health, and is perhaps best known for his role in the development of Diagnosis Related Groups (DRGs) for hospital reimbursement. A true innovator, Professor Thompson was an early advocate for the application of quantitative data in health policy formulation. Today's healthcare management students and leaders continue to be inspired by his compassion for patients, dedication to research, and belief in the power of data. The John Devereaux Thompson Academic Development Fund was created in his honor.

## PREVIOUS AWARD RECIPIENTS

2001	Gail Warden	2007	Cleve Killingsworth	2014	Elizabeth Bradley
2002	Elaine Ullian	2008	Martin Sepulveda	2015	Harlan Krumholz
2003	Gail Wilensky	2009	Ira Magaziner	2016	Leah Binder
2004	Nancy Johnson	2010	Don Berwick	2017	Patrick Conway
2005	Joseph Zaccagnino	2011	Cheryl Scott	2018	Marna Borgstrom
2006	Patrick Charmel	2012	Robert Galvin	2019	Vivian W. Pinn
		2013	Carolyn Clancy		



## CLOSING KEYNOTE

### DR. KATHERINE BAICKER



**Katherine  
Baicker, PhD**

Dean & Emmet  
Dedmon Professor,  
The Harris School of  
Public Policy at the  
University of Chicago

**Katherine Baicker, PhD**, is the Dean and the Emmett Dedmon Professor at the Harris School of Public Policy at the University of Chicago. She is a research associate at the National Bureau of Economic Research and an elected member of the National Academy of Medicine, the National Academy of Social Insurance, the Council on Foreign Relations, and the American Academy of Arts and Sciences.

Dean Baicker serves on the Congressional Budget Office's Panel of Health Advisers and as a Director of Eli Lilly and HMS Holdings. She is a member of the Advisory Board for the National Institute for Health Care Management; a Trustee of NORC; and a Trustee of the Mayo Clinic. She has served as a Commissioner on the Medicare Payment Advisory Commission; as Chair of the Massachusetts Group Insurance Commission; as Chair of the Board of Directors of AcademyHealth, and as a Senate-confirmed Member of the President's Council of Economic Advisers.

Dean Baicker's research focuses on the effectiveness of public and private health insurance, including the effect of reforms on the distribution and quality of care. She is one of the leaders of the Oregon Health Insurance Experiment, a randomized evaluation of the effects of Medicaid coverage. She received her BA in economics from Yale and her PhD in economics from Harvard.

Dr. Baicker's closing keynote address, "Medicaid for Some? Medicare for All?" will focus on insurance expansion and the impacts of COVID-19 on healthcare coverage.





## OUR 2020 SPONSORS

### FOR PROFIT

#### PLATINUM



#### GOLD



#### SILVER



*Books generously  
donated in part by  
ALLEYCORP*

#### BRONZE



### NONPROFIT

#### ANGEL

Yale SCHOOL OF PUBLIC HEALTH

#### ASSOCIATE



Yale SCHOOL OF MEDICINE



## ADVISORY BOARD

We extend our sincere gratitude to our advisory board, without whom we could not have created nor coordinated this event.

**ANDREW BHAK, MPH\***

Managing Director & Head of the Healthcare Investment Banking Group, BMO Capital Markets

**FUAD EL-HIBRI, MBA\***

Chairman of the Board of Directors, Emergent BioSolutions, Inc.

**HOWARD FORMAN, MD, MBA**

Professor, Diagnostic Radiology, Public Health, Economics, and Management, Yale University; Director, MD/MBA Program, MBA for Executives, and Health Care Management Program

**ROBERT GALVIN, MD**

Chief Executive Officer, Equity Healthcare Operating Partner, Blackstone Group

**ERIC GOLDING, MD\***

Vice President, Consonance Capital

**CLARION JOHNSON, MD\***

Chair, Joint Commission's International and Resource Boards

**GREG LICHOLAI, MD, MBA\***

Chief Medical & Information Officer, PRA Health Sciences; Instructor, Health Care Management, Yale University School of Management

**INGRID NEMBARD, MS, PhD\***

Fishman Family President's Distinguished Professor and Associate Professor of Health Care Management, The Wharton School at the University of Pennsylvania; Adjunct Associate Professor of Public Health, Yale University

**SANDRA D, PHAM, MPH\***

President & CFO, West Coast University Chief Financial and Business Development Advisor, BlueJay Mobile-Health Inc.

**ELLEN SKINNER, MBA\***

Founder and President, Connected Healthcare Strategies, LLC

**SAM SRIVASTAVA, MPH\***

CEO, BrightHealth, Inc.

**AMY WOODRUM, MBA, MPH\***

Engagement Manager, The Chartis Group

**NANCY YEDLIN, MPH\***

Vice President, The Donaghue Foundation



## SPECIAL THANKS

The 2020 Yale Healthcare Conference Planning Committee would like to thank the following people who have provided us with invaluable advice and unwavering support in planning this event

### COMMUNITY SUPPORT

Aaron Schleicher  
Brian Perrin  
Donald Guzauckas Jr  
Jessica Scrugges  
Jessica Volstad  
Margaret Cartiera  
Ted Harlett  
The Family of John D. Thompson  
Yelena Nesbit

### YALE SCHOOL OF MEDICINE

Associate Dean Nancy Angoff  
Associate Dean Michael Schwartz

### YALE PHYSICIAN ASSOCIATE PROGRAM

Elizabeth Roessler

### YALE SCHOOL OF PUBLIC HEALTH

Dean Sten Vermund  
Brittany Connolly  
Carolyn Czarniak  
Claire Masters  
Heidi Richards  
Stacey Tuttle

### YALE SCHOOL OF MANAGEMENT

Dean Kerwin Charles  
Adrienne Gallagher  
Amber Bryant  
Arabella Yip  
Ben Mattison  
Bradley Bower  
Brendan Hansen  
Dawn Allen  
Debra Soulsby  
Emily Codling  
Emily Donnery  
Froilan Cruz  
Jaclyn Scotto  
Judith Gargiulo  
Kit Heeley  
Kristin Zanjani  
Rebecca Udler  
Ryan Cozzubbo  
Talibah Louis

### YALE SCHOOL OF NURSING

Dean Ann Kurth  
Associate Dean Saveena Dhall  
Associate Dean Laron Nelson  
Raven Rodriguez



## PAST CONFERENCE CHAIRS

In recognition of the fact that the success of today's conference depends profoundly on the accomplishments of the past Co-Chairs, we would like to give an enormous thank you to the organizers of previous conferences.

### **2005 Yale Healthcare Conference Founding Committee**

*Eric Anderson, PhD, MBA 2007*  
*Paul Coggin, MPM 1995*  
*Samuel A. Forman, MD, MBA 1995*  
*Laura Hill, MBA, MPH 2006*  
*Julie Huang, MBA, MPH 1995*

### **2006 Yale Healthcare Conference**

*Kevin Giordano, MBA 2006*  
*Vipan Nikore, MBA 2006*  
*Grace Ruben, MBA 2006*

### **2007 Yale Healthcare Conference**

*Alexandra Beale, MBA, MPH 2008*  
*Victoria Potterton, MD, MBA 2007*

### **2016 Yale Healthcare Conference**

*Courtney Bannerot, MPH, MBA 2016*  
*Freddy Zhang, MBA 2016*

### **2008 Yale Healthcare Conference**

*Benjamin Elkins, BA, MPH 2009*  
*Krishan Soni, MD, MBA 2008*

### **2009 Yale Healthcare Conference**

*Robert Savert, MD, MBA 2009*  
*David Wagner, BA 2009*

### **2010 Yale Healthcare Conference**

*Diwen Chen, MPH 2010*  
*Sachin Shah, MD 2011*  
*Randi Wiggins, MBA 2010*

### **2011 Yale Healthcare Conference**

*Jill Seidman, MPH 2011*  
*Hiromi Yoshida, MD, MBA 2011*

### **2012 Yale Healthcare Conference**

*Dan Gong, MD 2014*  
*Joef Hatton, MBA 2012*

### **2013 Yale Healthcare Conference**

*Giselle Crosa, MPH, MBA 2014*  
*Yelena Yakunina, MBA 2013*

### **2014 Yale Healthcare Conference**

*Ariel Levin, MBA 2014*  
*Britt Sandler, MD, MBA 2016*  
*William Shaw, MBA 2014*

### **2015 Yale Healthcare Conference**

*Maggie Schnog, MBA 2015*  
*Gregory Whitehouse, MBA 2015*

### **2017 Yale Healthcare Conference**

*Lisa Carley, MPH, MBA 2017*  
*Amy Woodrum, MPH MBA 2017*

### **2018 Yale Healthcare Conference**

*Vivian Nguyen, MPH, MBA 2019*  
*Avi Tutman, MPH, MBA 2018*

### **2019 Yale Healthcare Conference**

*Jane Wiedenbeck, MBA 2019*  
*Mike Yepes, MPH 2019*





## PITCH SLAM

We would like to extend our deepest thanks to all of the teams who submitted proposals for the Inaugural Yale Healthcare Conference Health Innovation Pitch Competition. Unfortunately, in light of the COVID-19 pandemic and the resulting transition of the 16th Annual Yale Healthcare Conference to an abbreviated virtual format, the Organizing Committee has made a difficult decision to cancel this year's YHC Health Innovation Pitch Competition.

We have received a number of novel proposals addressing affordability challenges; the incredible work being done in this arena is awe inspiring. We would like to thank all the teams for the time and effort put into your submissions.

Below we would like to recognize the top three submissions received, listed in alphabetical order.

### HONORABLE MENTION

#### CLOUD PROPHECY

*Joseph J. Bango, Jr., Makayla Maroney, Patrick J. Conway, Ruba Deeb, and Sophia Agonstinelli,*

Cloud Prophecy proposes a new concept for a network of specialized continuous ambient air sampling systems, which employ a novel non-destructive ionization and separation method, coupled to a near real-time genomic sequencer. The network of preferably viral samplers would constitute a plurality of distributed nodes throughout the world, with viral concentration, identification, and mutation data uploaded to the cloud for epidemic/pandemic predictive modeling.

The proposed model offers the ability to migrate from outbreak surveillance, to outbreak forecast. In addition, the capability for continuous pathogen data of predominately viral genomic sequencing offers an enhanced capability to help track antigenic drift and antigenic shift. While optimized for viral capture and analysis, any airborne pathogen or spore can be accepted using the technology. An effective monitoring system necessitates a predictive modeling system that is dynamic, which responds and adapts to similar epidemiological infection trends. Applications include world health monitoring, pandemic prediction, and detection of real-time bioterror pathogen deployment.



## PITCH SLAM

### HONORABLE MENTION

#### NAVI HEALTH

*Nitya Kanuri, Agnieszka Matyja-Sanetra, Salina Hum*

The U.S. is facing a student mental health crisis, compromising health and education. Over the last 3 years, colleges have seen anxiety and depression symptoms increase by nearly 50%, and suicide attempts have nearly tripled. We've also seen service use increase, with roughly 1 in 3 students seeking counseling. Increased symptomatology causes worse overall health outcome, as well as higher dropout rates and lower academic scores. College counseling centers are overwhelmed. Students face long wait times and inconsistencies in care, with minorities further underserved due to increased stigma and reduced help-seeking. Additionally, less than 20% of students who die by suicide have seen the college counselor.

Maintaining the status quo of only triaging high-risk students who proactively ask for help is not an option. Navi Health's digital triage tools route students to effective care quickly, giving students agency and choice in their journey to mental wellness. Based on student input in our digital mental wellness assessment, students are recommended a particular intervention, e.g., 1:1 counseling, group-based therapy, or self-help resources. On-going monitoring and communication through digital assessments enable us to track outcomes and 'step up' students to other interventions as necessary or desired.

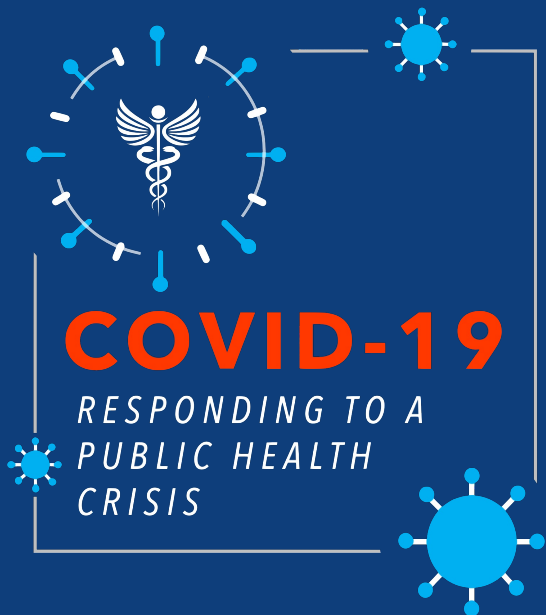
### HONORABLE MENTION

#### RIGHT TO HEALTH

*Yaron Seidman*

Right to Health leverages big data machine learning of complementary care models, generating protocols followed by clinical research to test which protocols yield most cost savings to the healthcare system.

The goal is to develop, research and implement Affordable Care Protocols (ACPs) utilizing low cost complimentary care modalities such as acupuncture, diet, massage, exercise, herbals and clinical and psychological effectiveness algorithms on a large scale that will result in a unique database of best ACP cost savings for specific ailments, derived from complex analysis of lowest cost care versus highest treatment efficacy and when implemented throughout the healthcare system will reduce the overall healthcare cost for governments and insurers, increase reimbursement rates for providers, decrease the out of pocket cost for patients and increase availability of medicine to the masses.



17<sup>th</sup> ANNUAL YALE HEALTHCARE  
CONFERENCE

**04.15.2021 &  
04.16.2021**

WE'LL SEE YOU NEXT YEAR!

